



open<sup>2</sup>view.com.au

#1648

Presents

Photographs of the property  
at

**St Louis Estate, Albert Street, CLAREMONT**

OCKERBY REAL ESTATE  
Established 1880

6 offices, 1 team



ST LOUIS ESTATE  
CLAREMONT



*The friendly Reception*







*Lounge Area*



*Courtyard*

*Please scroll right*





*Spacious Bathrooms*



*Entrance to Unit....*



A photograph of a residential property. In the foreground, a paved walkway made of reddish-brown bricks leads towards a central lawn. To the left, there is a large, dense bush with green and yellowing leaves. To the right, there are various green plants, including ferns and a large tree with a thick trunk. In the background, a two-story brick house with a red roof is visible. The house has a covered porch area with white vertical slats. A tall, thin cypress tree stands near the house. The sky is blue with some light clouds.

*Pretty Grounds & Walkways*

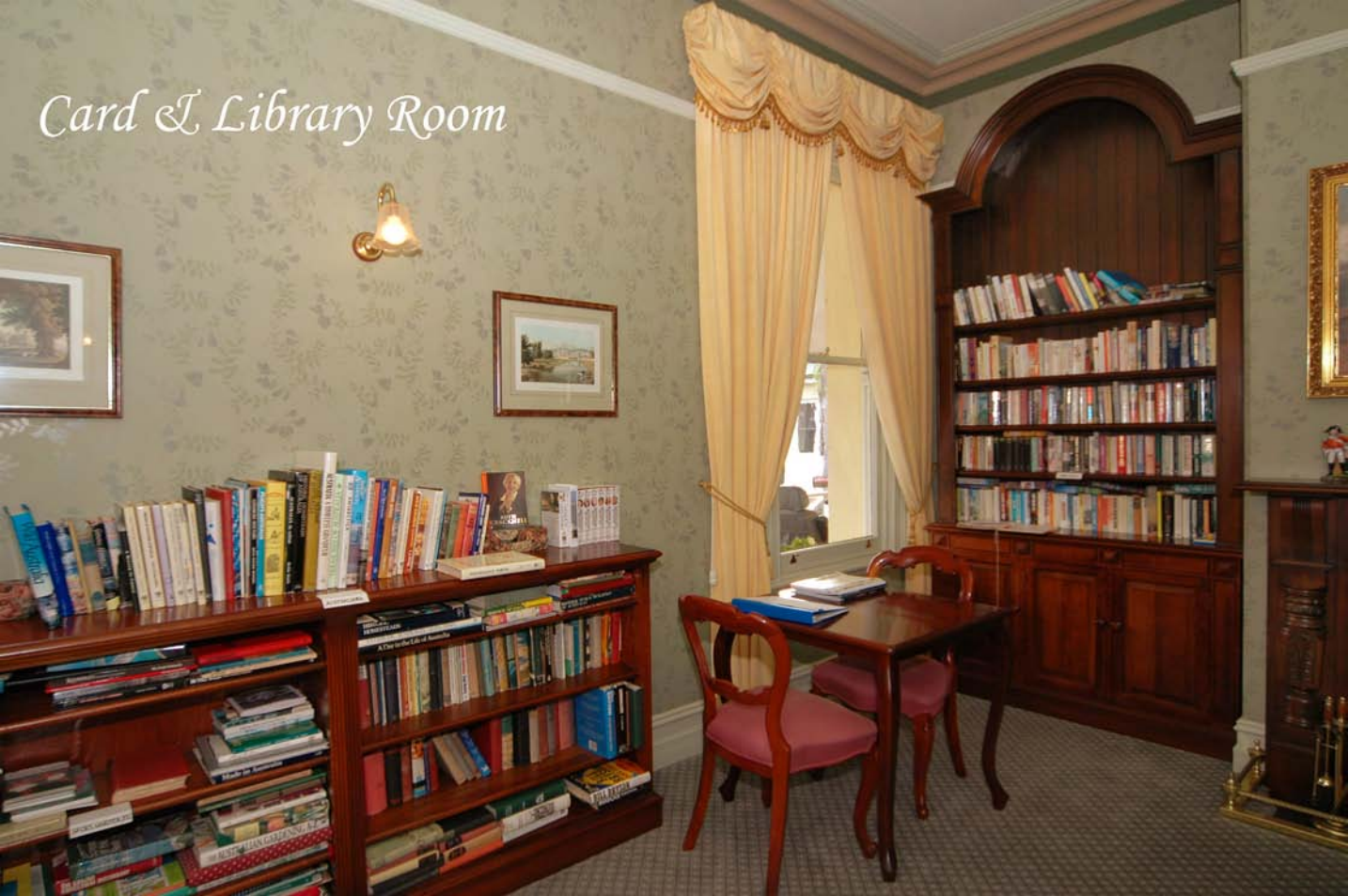


*The Dining Room*

# *Computer Room*



*Card & Library Room*



*Hairdressing Salon*







*Meeting room*



*Regular Tai Chi Classes*



*Regular Entertainment*

